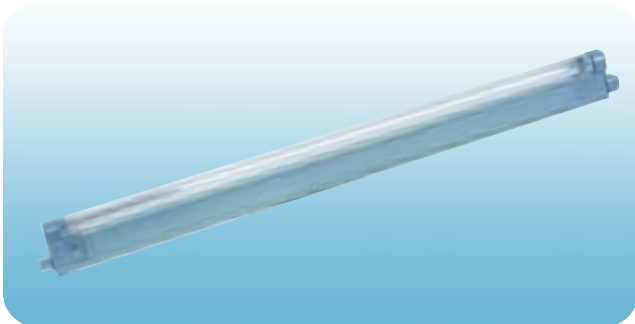
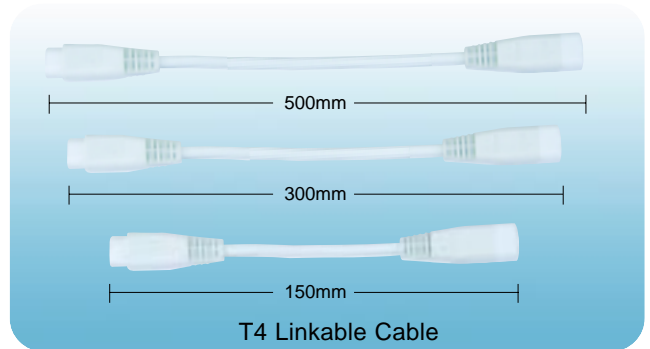
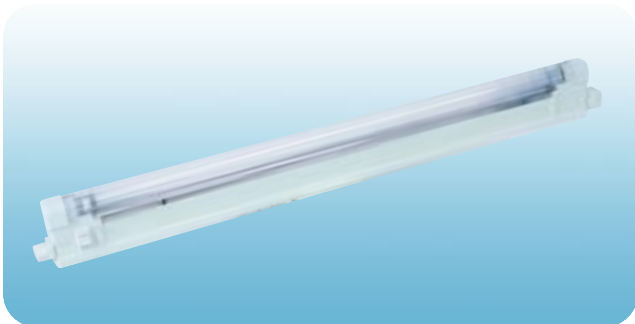
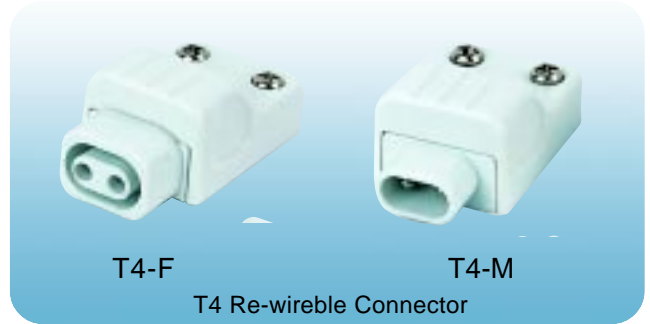
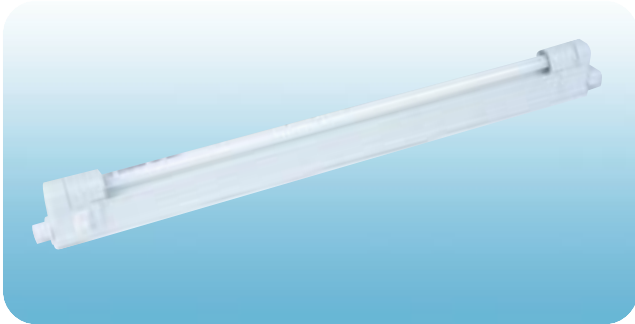
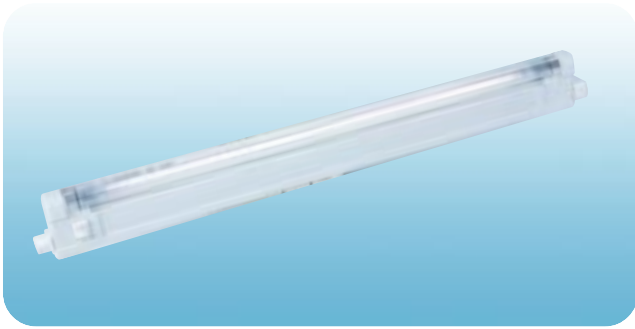


T4 STRIP CABINET LIGHT



There are different items for T4 strip cabinet lamp.

The details are as below:

- LLA110:Lamp with cover/switch, without reflector
- LLA101:Lamp with cover,without switch/reflector
- LLA102:Lamp with cover/reflector,without switch
- LL112:Lamp with switch/reflector,without cove
- LL102:Lamp with reflector,without cover/switch
- LL111:Lamp with switch,without cover.reflector
- LL101:Lamp without cover/switch.reflector

The General Specification of T4 Strip Cabinet lamp is as below:

VOLTAGE	WATTAGE	LENGTH(MM)	WIDTH(MM)	HEIGHT(MM)	TUBE
220V/50Hz 120V/60Hz	6W	268	18	42	T4
220V/50Hz 120V/60Hz	8W	394	18	42	T4
220V/50Hz 120V/60Hz	10/12W	500	18	42	T4
220V/50Hz 120V/60Hz	16W	525	18	42	T4
220V/50Hz 120V/60Hz	20W	625	18	42	T4
220V/50Hz 120V/60Hz	24W	705	18	42	T4
220V/50Hz 120V/60Hz	30W	815	18	42	T4

Inter-linkable design for up to 10 Pcs of lamps



I,T4 Electronic Wall-lamps Series

1,With CE/GS/EMC/UL/ROHS/WEEE Approval

2,For T4/G5 fluorescent lamps

3,It can be with different length of linkable wire

4,With 1800mm power lead

RI2032

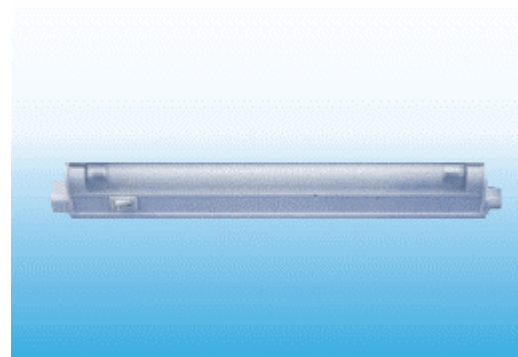
Specification:

Operationg Voltage:220-240V/50Hz,110-130V/60Hz

Built-in electronic ballast

For T4/G5 6W/8W/12W/16W/20W Flurescent lamps

Intergral switch and power cord




Model	Total Wattage	Length(mm)	Width(mm)	High(mm)	Qty(pcs/ctn)	Packing Size(cm)	G.W(kg/ctn)
RI2032	6W	250	19	36	30	27X22.5X33.5	8
RI2032	8W	371	19	36	30	39X22.5X33.5	9.5
RI2032	12W	400	19	36	30	42X22.5X33.5	11
RI2032	16W	498	19	36	30	51.5X22.5X33.5	13
RI2032	20W	598	19	36	30	61.5X22.5X33.5	15

RI2051

Specification: Operating Voltage:220-240V/50Hz,110-130V/60Hz Built-in electronic ballast For T4/G5 6W/8W/12W/16W/20W/24W/30W Flurescent lamps With Switch,Diffuser					
Model	Total Wattage	Length(mm)	Qty(pcs/ctn)	Packing Size(cm)	G.W(kg/ctn)
RI2051	8W	370	30	40.5X41X19	9.1
RI2051	10W	399	30	43.5X41X19	10.1
RI2051	16W	498	30	53.5X41X19	10.9
RI2051	20W	603	20	63.5X33.5X17.5	8.5

RI2035

Specification: Operating Voltage:220-240V/50Hz,110-130V/60Hz Built-in electronic ballast For T4/G5 Flurescent lamps With Switch,Diffuser					
					
Model	Total Wattage	Length(mm)	Qty(pcs/ctn)	Packing Size(cm)	G.W(kg/ctn)
RI2035	12W	580	12	59.5X30X45.5	12.5